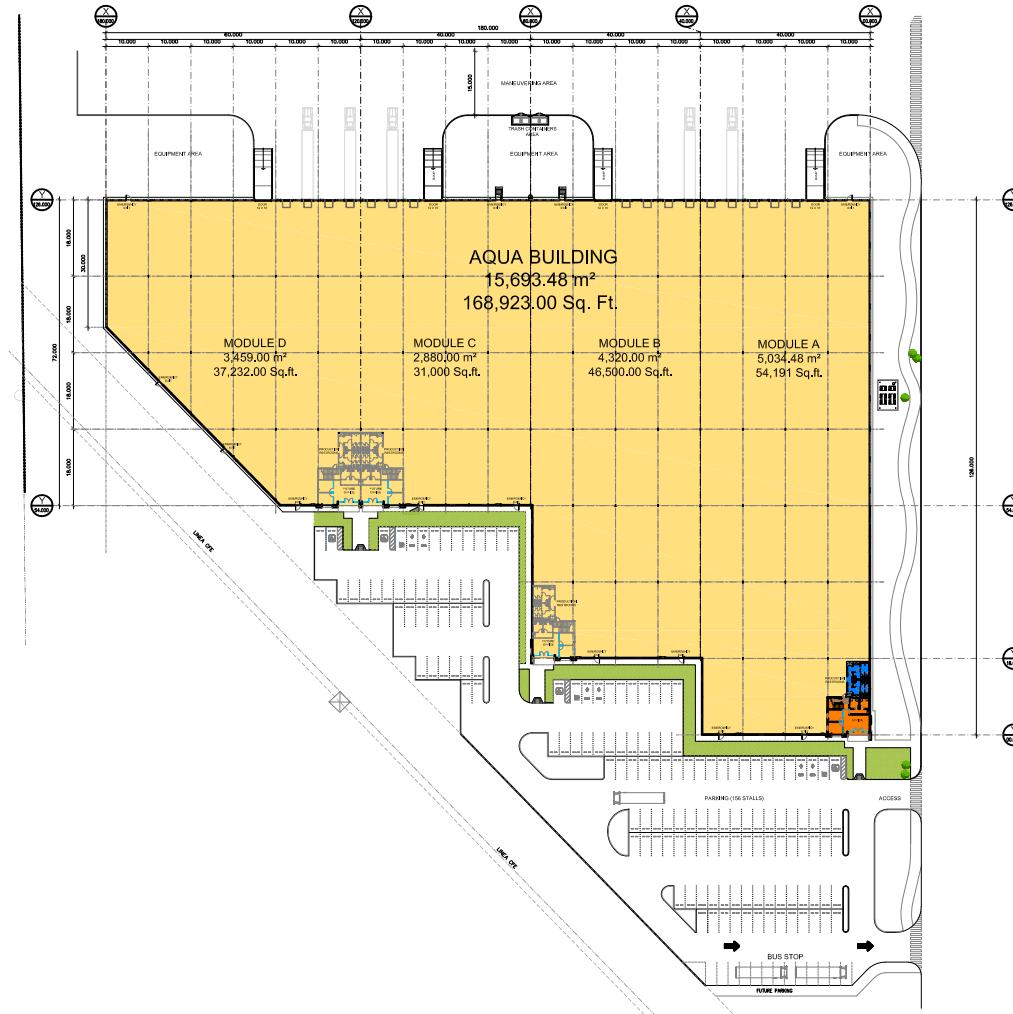


PROJECT

Available Space

CONTENT

Aqua Building



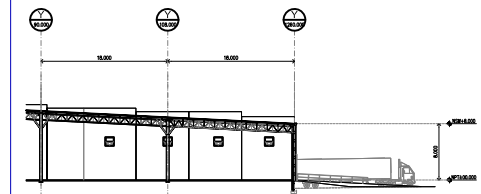
LOCATION MAP



BUILDING VIEW



BUILDING SECTION



DATE
FILE



MEMBER OF THE MEXICAN ASSOCIATION OF INDUSTRIAL PARKS

CONTACT INFO

E-MAIL cmedina@iamsa.com.mx

MEX +52 (662) 115 3658

USA 1-877 228 4368

www.iamsa.com.mx

grupoiamsa

BUILDING SPECS

AREAS

Production	167,951 Sq. Ft.
Office area	972 Sq. Ft.
Total area	168,923 Sq. Ft.

CLIENT

AVAILABLE

viewerte
BUSINESS CENTER 2.0
HERMOSILLO

NMX-R-046-SCF-2015 CERTIFIED INDUSTRIAL PARK

DISCLAIMER
THE DESIGN SHOWN HEREIN IS THE SOLE PROPERTY OF THE IAMSA GROUP AND WAS CREATED AND DEVELOPED FOR USE IN CONNECTION WITH THIS PROJECT AND CANNOT BE REPRODUCED, COPIED OR ADAPTED, WITHOUT PRIOR WRITTEN CONSENT. COPYRIGHT 2022 IAMSA GROUP.